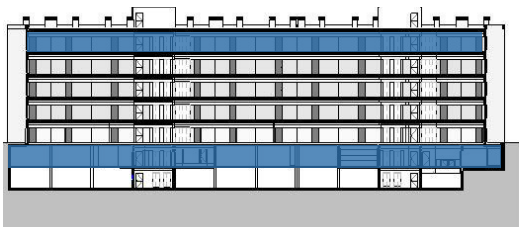
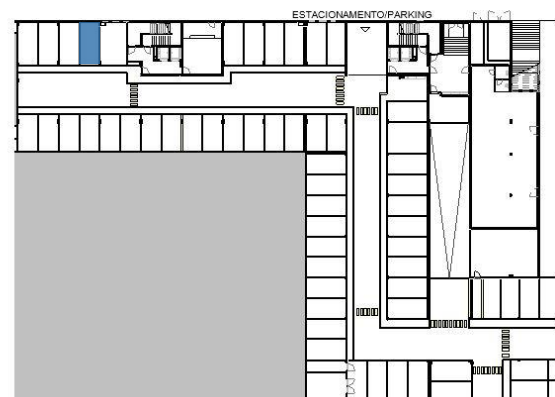
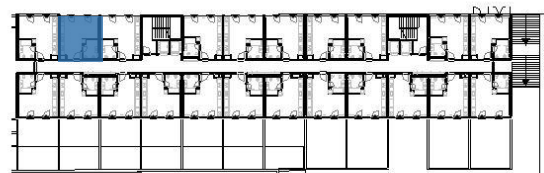


FRAÇÃO / UNIT ID **B2-5.U**

T1 STUDIO

ÁREA TOTAL / TOTAL AREA	51.50m ²
ÁREA BRUTA PRIVATIVA / GROSS PRIVATE AREA	34.34m ²
ESTACIONAMENTO / PARKING	17.16m ²
ESTACIONAMENTO / PARKING	B2-5.U



← Piso 5

← Piso -1