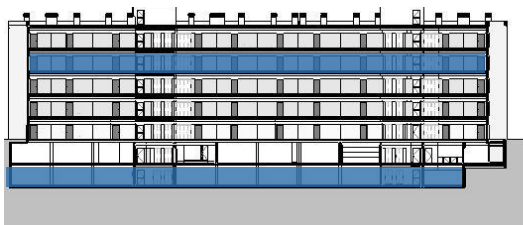
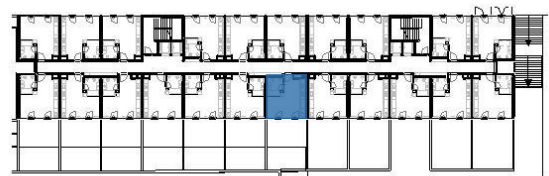


FRAÇÃO / UNIT ID **B2-4.F**

T1 STUDIO

ÁREA TOTAL / TOTAL AREA	47.92m ²
ÁREA BRUTA PRIVATIVA / GROSS PRIVATE AREA	33.57m ²
ESTACIONAMENTO / PARKING	14.35m ²
ESTACIONAMENTO / PARKING	B2-4.F



← Piso 4

← Piso -2

