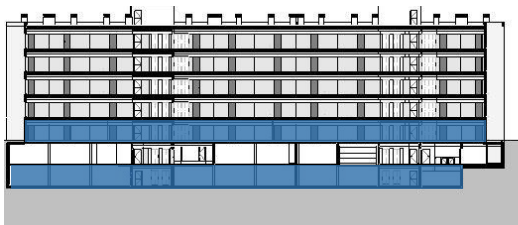
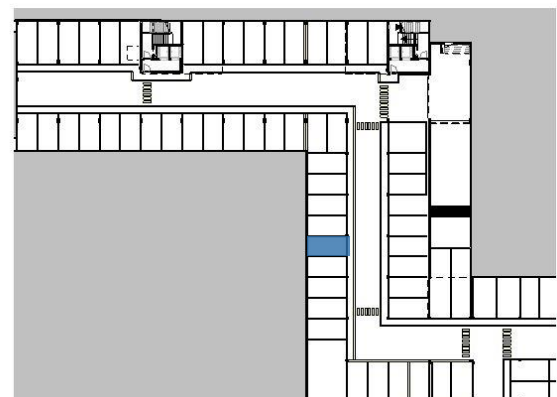


FRAÇÃO / UNIT ID B2-1.F

T1 STUDIO

ÁREA TOTAL / TOTAL AREA	88.35m ²
ÁREA BRUTA PRIVATIVA / GROSS PRIVATE AREA	33.57m ²
TERRAÇO / TERRACE	39.14m ²
ESTACIONAMENTO / PARKING	15.54m ²
ESTACIONAMENTO / PARKING	B2-1.F



← Piso 1
← Piso -2