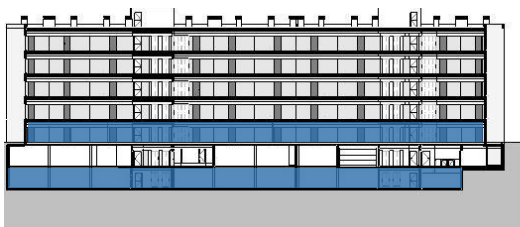
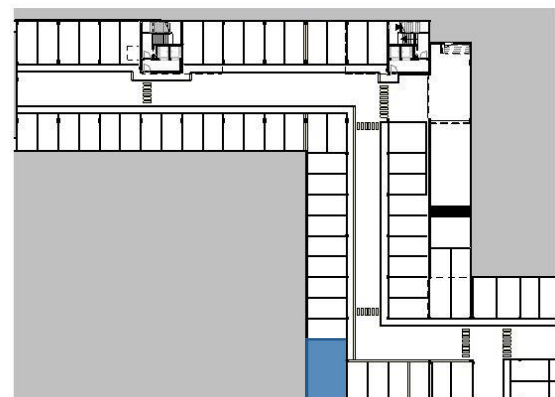
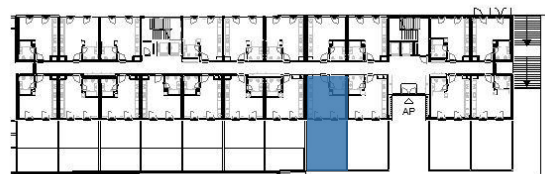


FRAÇÃO / UNIT ID B2-1.E

T1 STUDIO

ÁREA TOTAL / TOTAL AREA	120.98m ²
ÁREA BRUTA PRIVATIVA / GROSS PRIVATE AREA	34.34m ²
TERRAÇO / TERRACE	39.14m ²
ESTACIONAMENTO / PARKING	47.50m ²
ESTACIONAMENTO / PARKING	B2-1.E



← Piso 1
← Piso -2